

VANSE

CONSTRUCTION MACHINERY

SHANDONG VANSE MACHINERY TECHNOLOGY CO., LTD.

 No. 88 Chuangye Rd., Yanzhou District, Jining, Shandong, China

 sales@vanse.cc  +86 13639422395  www.vansemac.com



Scan the QR code to view the website of Vanse Group.

For more products, please contact us.

Yanzhou, Shandong, China

- 01 ABOUT VANSE**
 - COMPANY PROFILE 03
 - CERTIFICATES 04
- 02 CONCRETE LASER LEVELING MACHINE - BOOM TYPE**
 - BOOM LASER LEVELING MACHINE YZ40-4E 05
 - BOOM LASER LEVELING MACHINE YZ30-4E 07
 - BOOM LASER LEVELING MACHINE YZ30-4F 09
 - BOOM LASER LEVELING MACHINE YZS2-4 11
- 03 TOPPING SPREADER**
 - TOPPING SPREADER SL18-6 13
 - TOPPING SPREADER SL18-6A 14
 - CONSTRUCTION CASE 15
- 04 CONCRETE LASER LEVELING MACHINE**
 - RIDE-ON LASER LEVELING MACHINE WS940C 17
 - RIDE-ON LASER LEVELING MACHINE WS940 18
 - RIDE-ON LASER LEVELING MACHINE WS550 19
 - RIDE-ON LASER LEVELING MACHINE YZ28-4S 20
 - RIDE-ON LASER LEVELING MACHINE YZ25-4 21
 - WALK-BEHIND LASER LEVELING MACHINE DZ25-2 22
 - WALK-BEHIND LASER LEVELING MACHINE DZ30-2 22
 - ELECTRIC CONCRETE LASER LEVELING MACHINE WS25-2D 23
 - ELECTRIC CONCRETE LASER LEVELING MACHINE WS940D 24
 - CONSTRUCTION CASE 25
- 05 SPREADER**
 - CONCRETE DISTRIBUTOR BL-360 27
 - PIPE PULLER MACHINE BG125 27
 - CONSTRUCTION CASE 28
- 06 POWER TROWEL**
 - RIDE-ON TROWEL VS1046H 29
 - RIDE-ON TROWEL VS1046 30

- RIDE-ON TROWEL VS836H 31
- RIDE-ON TROWEL VS836 31
- SIDE-MOUNTED ENGINE VS836 32
- SIDE-MOUNTED ENGINE VS830 32
- WALK-BEHIND TROWEL VS436 33
- EDGING TROWEL VS424 33
- PAN 34
- BLADE 35
- CONSTRUCTION CASE 36

- 07 FLOOR MACHINE**
 - CONCRETE CUTTING MACHINE VS-HM500 37
 - CONCRETE CUTTING MACHINE VS-HM501 37
 - SAW BLADE 38
 - HAND-PUSHED SPREADER VS1000 38
 - CONCRETE LEVELING RULER 39
 - BACKPACK VIBRATING ROD 39
 - CONSTRUCTION CASE 40
 - TRACKED MINI DUMPER VSD500L 41
 - TRACKED MINI DUMPER VSD1200/VSD1200S 41
 - TRACKED MINI DUMPER VSD2000R 42

- 08 STEEL FIBER**
 - TYPES OF STEEL FIBERS 43

- 09 ARMOUR JOINT**
 - ARMOUR JOINT 45
 - CONSTRUCTION CASE 46

- 10 LITHIUM BATTERY LIGHTING**
 - PORTABLE LITHIUM BATTERY LIGHTING WSY-55C 47
 - SOLAR LITHIUM BATTERY LIGHTING WSY-160T 48

- 11 ROAD & BRIDGE EQUIPMENT**
 - SLIP FORM PAVER WS3-14 49
 - CONSTRUCTION CASE 50

COMPANY PROFILE

Shandong Vanse Group was founded in 2013. Vanse seized the historical opportunity of the rapid development of the concrete industry and adhered to the development direction of high-end, high quality and high efficiency. It soon became a national high-tech enterprise integrating research and development, manufacturing, sales and after-sales of concrete equipment. Vanse has successfully reached project cooperation with a number of partners, such as Jingdong Logistics, CATL, Great Wall Motor Company Limited, and CSCEC (China State Construction Engineering Corporation).

Vanse Group consists of many business divisions such as Vanse Machinery, Wanhui New Energy, Wanli Precision Machinery Manufacturing, Vanse Road and Bridge Machinery. Vanse Machinery(SEA) etc. Besides Chinese local market, our products have been exported to our products are exported to more than 50 countries and regions, such as USA, Mexico, UK, Spain, Germany, Russia, Malaysia, Australia, Saudi and so on.

In 2018, Vanse Group reached a technical cooperation agreement with British experts, introduced international high-end technology, and achieved international standards for the matching of humanized mechanical design and performance with laser systems. We also established in-depth cooperation relationships with Shandong University and Chang'an University, integrating industry, academic, research and application.

Vanse Group has never stopped thinking about the future development and pursuing the hope of creating a better life for human beings.

Grasp the present, realize the future development, Vanse will create a brilliant future together with you!

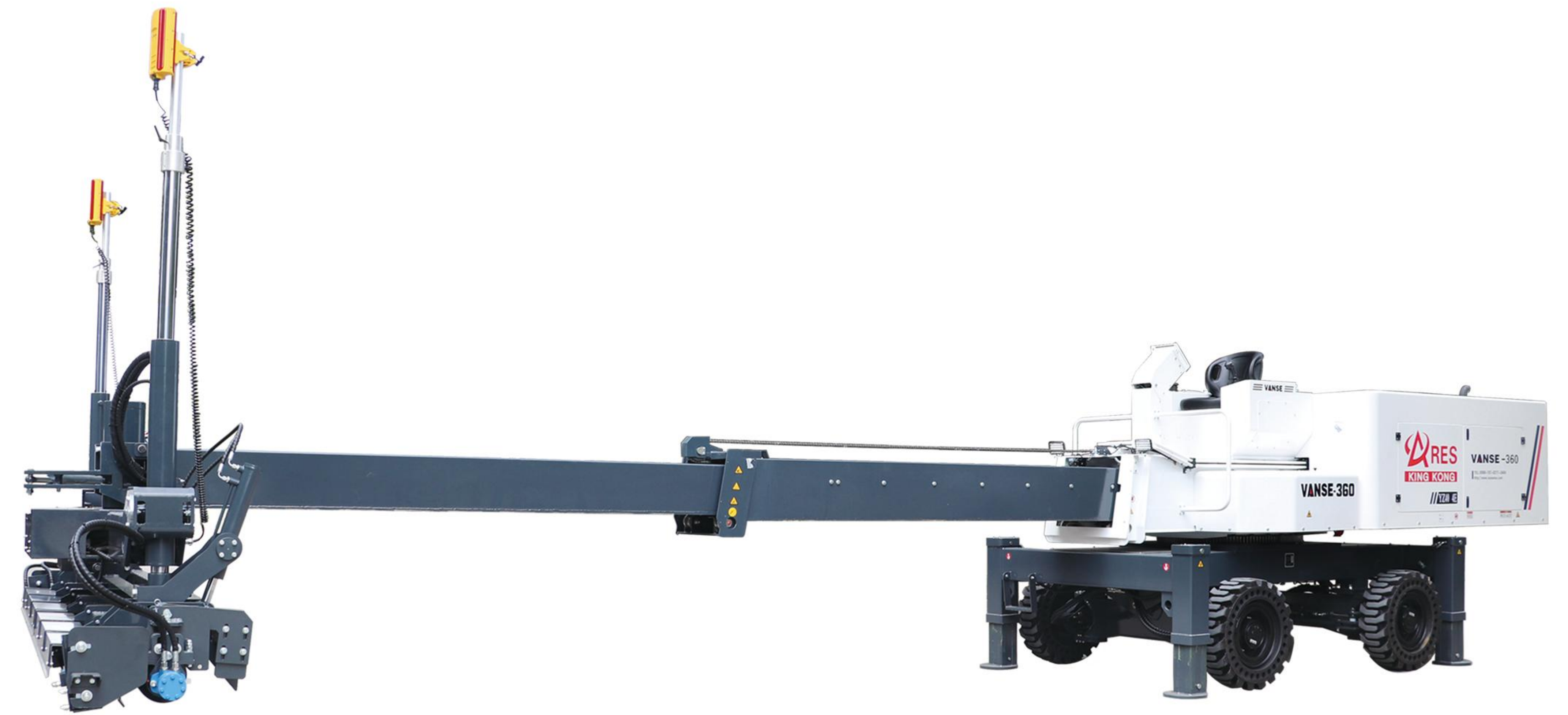
CERTIFICATES



CONCRETE LASER LEVELING MACHINE

■ YZ40-4E

BOOM LASER LEVELING MACHINE



TECHNICAL PARAMETERS

- | | | | |
|----------------------|--|-----------------------|---------------------------------------|
| • Engine model | YANMAR 4TNV98T | • Leveling width | 4m / 13.12ft |
| • Power | 57kW / 78HP | • Telescopic arm | 6m / 19.69ft long, 360°turn |
| • Fuel | Diesel | • Leveling head swing | Left swing: 45°, right swing: 75° |
| • Fuel tank capacity | 140L | • Paving mode | Hydraulic spiral conveyor paving |
| • Steering mode | Two wheel, four wheel
crab steering | • Exciting force | 5600N (Max) |
| | | • Net weight | 8000kgs / 17637lbs |
| | | • Dimension | 6000x4560x2550mm / 19.69x14.96x8.37ft |
| | | • Transportation size | 9120x2300x2580mm / 29.92x7.55x8.46ft |

PRODUCT FEATURES

- The body rotates 360 degrees infinitely, making construction agile.
- One-click leveling of the body allows for easy handling of various complex work site conditions.
- The automatic leveling system is not only more precise in operation but also reduces the operator's labor force.
- Standard configured cleaning system with a maximum cleaning pressure of 150 Bar, large capacity water tank, convenient and fast flushing.
- Solid rubber tire with process grooves, resistant to punctures and more comfortable.
- Optional inflatable wide tires.
- More comprehensive and automated accessories included to meet diverse needs and more convenient for machine maintenance.
- Working head is standard equipped with soft landing system.
- Compatible with 3D profiler system.

■ YZ30-4E

BOOM LASER LEVELING MACHINE



TECHNICAL PARAMETERS

- | | | | |
|----------------------|-----------------------------|-----------------------|---------------------------------------|
| • Engine model | YANMAR 4TNV94L | • Leveling head swing | Left swing: 45°, right swing: 75° |
| • Power | 35kW / 48HP | • Exciting force | 4500N (Max) |
| • Fuel | Diesel | • Walking speed | 3km / h |
| • Fuel tank capacity | 100L | • Steering mode | Two wheel, four wheel, crab steering |
| • Leveling width | 3.1m / 10.17ft | • Net weight | 5800kgs / 12787lbs |
| • Telescopic boom | 6m / 19.69ft long, 360°turn | • Dimension | 5550x3700x1870mm / 18.21x12.14x6.14ft |
| | | • Transportation size | 8000x2300x2400mm / 26.25x7.55x7.87ft |

PRODUCT FEATURES

- The body rotates 360 degrees infinitely, making construction agile.
- One-click leveling of the body allows for easy handling of various complex work site conditions.
- The automatic leveling system is not only more precise in operation but also reduces the operator's labor force.
- Standard configured cleaning system with a maximum cleaning pressure of 150 Bar, large capacity water tank, convenient and fast flushing.
- Solid rubber tire with process grooves, resistant to punctures and more comfortable.
- Optional inflatable wide tires.
- More comprehensive and automated accessories included to meet diverse needs and more convenient for machine maintenance.
- Working head is standard equipped with soft landing system.
- Compatible with 3D profiler system.

YZ30-4F

BOOM LASER LEVELING MACHINE



TECHNICAL PARAMETERS

• Engine model	YANMAR 4TNV94L	• Exciting force	4500N(Max)
• Power	35kW / 48HP	• Walking speed	3km / h
• Fuel	Diesel	• Steering mode	Two wheel, four wheel, crab steering
• Fuel tank capacity	100L	• Net weight	6000kgs / 13228lbs
• Leveling width	3.1m / 10.17ft	• Dimension	5550x3700x2600mm / 18.21x12.14x8.53ft
• Telescopic boom	6m / 19.69ft long, 360°turn	• Transportation size	8000x2200x2630mm / 26.25x7.22x8.63ft
• Leveling head swing	Left swing: 45°, right swing: 75°		

PRODUCT FEATURES

- High strength, light weight, easy and convenient transportation.
- Four wheel drive, equipped with anti-slip system, can meet complex work conditions.
- Suspended wheels can achieve extremely high passability.
- Max. 90° transverse walk, more agile and easy to operate.
- Soft landing function.
- Quick disassembled leveling head.
- Standard configured with seat, luggage compartment and high-pressure cleaner.
- Unique design of the protective cover can maximize the protection of the walking motor.
- Engine designed with an under-exhaust system, the upper part of the engine compartment is completely sealed, enhances the waterproof performance.

■ YZS2-4

BOOM LASER LEVELING MACHINE



TECHNICAL PARAMETERS

• Engine model	YANMAR 3TNV80F (Meet standards of Euro V, EPA and China National IV simultaneously)	• Telescopic boom	5.5m / 18ft long
• Power	17.8kW / 24HP	• Exciting force	200-900N(Max)
• Fuel	Diesel	• Walking speed	4.5km / h
• Fuel tank capacity	70L	• Steering mode	Two wheel, four wheel, crab steering
• Leveling width	3m / 9.84ft	• Net weight	2340kgs / 5159 lbs
		• Dimension	4600x3430x1970mm / 15.09x11.25x6.46ft
		• Transportation size	Machine body: 4400x1880x1970mm 14.44x6.17x6.46ft Working head: 3430x815x530mm 11.25x2.67x1.74ft

PRODUCT FEATURES

- High strength, light weight, easy and convenient transportation.
- Four wheel drive, equipped with anti-slip system, can meet complex work conditions.
- Suspended wheels can achieve extremely high passability.
- Max. 90° transverse walk, more agile and easy to operate.
- Soft landing function.
- Quick disassembled leveling head.
- Standard configured with seat, luggage compartment and high-pressure cleaner.
- Unique design of the protective cover can maximize the protection of the walking motor.
- Engine designed with an under-exhaust system, the upper part of the engine compartment is completely sealed, enhances the waterproof performance.

TOPPING SPREADER

■ SL18-6

TOPPING SPREADER



TECHNICAL PARAMETERS

• Engine model	YANMAR 4TNV94L	• Tire	Solid non-slip tires
• Power	35kW / 48HP	• Spreading width	1800mm / 5.91ft
• Fuel	Diesel	• Telescopic arm	6m / 20ft
• Fuel tank capacity	100L	• Hopper capacity	1500kgs / 3306lbs
• Steering mode	Two-wheel / four-wheel / crab steering	• Net weight	5460kgs / 12037lbs
		• Dimension	5495x2200x2730mm / 18.03x7.22x8.96ft

PRODUCT FEATURES

- Large-capacity hopper, greater continuous spreading capacity and more labor-saving for the operator.
- Precisely adjustable spreading slit.
- Equipped with dust reduction device and greatly reduce the physical harm of dust to operators.
- One click leveling of the machine body and easy to deal with various complex road surface.
- Multiple steering modes make it easy to handle all kinds of space operations.

■ SL18-6A

TOPPING SPREADER

TECHNICAL PARAMETERS

• Engine model	YANMAR 4TNV94L	• Spreading width	1800mm / 5.91ft
• Power	35kW / 48HP	• Telescopic arm	6m / 20ft
• Fuel	Diesel	• Hopper capacity	700kgs / 1543lbs
• Fuel tank capacity	80L	• Net weight	4410kgs / 9722lbs
• Steering mode	Two wheel	• Dimension	5244x2300x1870mm / 17.2x7.54x6.13ft
• Tire	Solid anti-skid and puncture-proof tires		

PRODUCT FEATURES

- Three-leg hydraulic lift.
- Solid anti-skid and puncture-proof tires.
- High performance load sensing plunger pump.
- Original imported load sensitive main control valve with pressure compensation.
- Hydraulic lines Gates of the United States German Continental.



■ CONSTRUCTION CASE



■ WS940C

RIDE-ON LASER LEVELING MACHINE



TECHNICAL PARAMETERS

- Engine model HONDA GX690
- Power 18.4kW / 25HP
- Fuel Gasoline
- Fuel tank capacity 19L
- Tire Inflatable narrow tires
(with inflatable wide tires)

- Leveling width 3m / 9.84ft
- Vibration system Hydraulic vibration
- Paving mode Hydraulic spiral conveyor paving
- Exciting force 200-900N (Max)
- Net weight 835kgs / 1841lbs
- Dimension 3470x3430x1525mm / 11.38x11.25x5.00ft
- Transportation size 3600x960x910mm / 11.81x3.15x2.99ft

PRODUCT FEATURES

- Honda engine, reliable and fuel-efficient.
- All aluminum body, lightweight and more convenient for various working conditions.
- Standard equipped with anti-slip system.
- Equipped with hydraulic brake system and trailer system.
- Quick receiver height fine-tuning.
- Working head is standard equipped with soft landing system.
- The switch detection and valve port calibration functions can ensure stable machine performance even after long-term use.
- Equipped with two types of tires and suitable for different working conditions.
- Compatible with 3D profiler system.
- Pillar anti-blocking function.

■ WS940

RIDE-ON LASER LEVELING MACHINE

TECHNICAL PARAMETERS

- Engine model HONDA GX690
- Power 18.4kW / 25HP
- Fuel Gasoline
- Fuel tank capacity 20L
- Tire Solid non-slip tires
(with inflatable wide tires)

- Leveling width 2.5m / 8.20ft
- Vibration system Electric motor
- Paving model Hydraulic spiral conveyor paving
- Exciting force 2000N
- Net weight 990kgs / 2183lbs
- Dimension 3600x3000x1650mm / 11.81x9.84x5.41ft
- Transportation size 3350x2000x1890mm / 10.99x6.56x6.2ft

PRODUCT FEATURES

- Honda engine, reliable and fuel-efficient.
- Driving with constant speed not only makes it more precise in operation but also reduce the operator's labor force.
- Standard equipped with anti-slip system.
- Quick receiver height fine-tuning.
- Equipped with two types of tires and suitable for different working conditions.



■ WS550

RIDE-ON LASER LEVELING MACHINE



TECHNICAL PARAMETERS

• Engine model	HONDA GX690	• Leveling width	2.4m / 7.87ft
• Power	18.4kW / 25HP	• Vibration system	Electric motor
• Fuel	Gasoline	• Paving mode	Shovel paving
• Fuel tank capacity	19L	• Exciting force	2000N
• Tire	Inflatable narrow tires (with inflatable wide tires)	• Net weight	740kgs / 1632lbs
		• Dimension	3202x2576x1299mm / 10.51x8.45x4.26ft(Install ruler)
		• Transportation size	3100x2050x1620mm / 10.17x6.73x5.31ft(Install ruler)

PRODUCT FEATURES

- Honda engine, reliable and fuel-efficient.
- Lightweight body for quick leveling operations.
- Standard equipped with anti-slip system.
- Quick receiver height fine-tuning.
- The switch detection and valve port calibration functions can ensure stable machine performance even after long-term use.
- Equipped with two types of tires and suitable for different working conditions.

■ YZ28-4S

RIDE-ON LASER LEVELING MACHINE

TECHNICAL PARAMETERS

• Engine model	HONDA GX690	• Leveling width	2.5m / 8.20ft
• Power	18.4kW / 25HP	• Vibration system	Electric motor
• Fuel	Gasoline	• Paving mode	Hydraulic spiral conveyor paving
• Fuel tank capacity	20L	• Exciting force	2000N
• Tire	Solid non-slip tires (with inflatable wide tires)	• Net weight	950kgs / 2094lbs
		• Dimension	3700x3000x1300mm / 12.14x9.84x4.27ft
		• Transportation size	3350x2000x1890mm / 10.99x6.56x6.2ft

PRODUCT FEATURES

- Honda engine, reliable and fuel-efficient.
- Driving with constant speed; more precise in operation; can reduce operator's labour force.
- Standard equipped with anti-slip system.
- Quick receiver height fine-tuning.
- Equipped with two types of tires and suitable for different working conditions.



YZ25-4

RIDE-ON LASER LEVELING MACHINE



TECHNICAL PARAMETERS

• Engine model	HONDA GX690	• Leveling width	2.5m / 8.20ft
• Power	18.4kW / 25HP	• Vibration system	Electric motor
• Fuel	Gasoline	• Exciting force	2000N
• Fuel tank capacity	30L	• Paving mode	Hydraulic screw conveyor paving
• Tire	Solid non-slip tires	• Net weight	1020kgs / 2249lbs
• Steering mode	Hand wheel control	• Dimension	3205x2960x1650mm / 10.52x9.71x5.41ft
		• Transportation size	3350x2000x1890mm / 10.99x6.56x6.2ft

PRODUCT FEATURES

- Honda engine, reliable and fuel-efficient.
- Driving with constant speed; more precise in operation; can reduce operator's labour force.
- Standard equipped with anti-slip system.
- Quick receiver height fine-tuning.

DZ25-2

WALK-BEHIND LASER LEVELING MACHINE



TECHNICAL PARAMETERS

• Engine model	SAWAFUJI
• Power	2.8kW / 3.8HP
• Fuel	Gasoline
• Fuel tank capacity	17L
• Leveling width	2.5m / 8.20ft
• Tire	Solid non-slip tires (with inflatable wide tires)
• Exciting force	2000N
• Net weight	400kgs / 882lbs
• Dimension	3210x2730x1160mm / 10.53x8.96x3.81ft
• Transportation size	2910X810X1110mm / 9.55x2.66x3.64ft

DZ30-2

WALK-BEHIND LASER LEVELING MACHINE

TECHNICAL PARAMETERS

• Engine model	SAWAFUJI
• Power	5kW / 6.8HP
• Fuel	Gasoline
• Fuel tank capacity	28L
• Leveling width	3m / 9.84ft
• Tire	Solid non-slip tires (with inflatable wide tires)
• Exciting force	2000N
• Net weight	490kgs / 1080lbs
• Dimension	3370x3230x1160mm / 11.06x10.60x3.81ft
• Transportation size	3410X810X1110mm / 11.19x2.66x3.64ft
• Vibration system	Electric motor



■ WS25-2D

ELECTRIC CONCRETE LASER LEVELING MACHINE



TECHNICAL PARAMETERS

- | | | | |
|-----------------------|-------------------------------------|------------------|---------------------------------------|
| • Battery capacity | 117Ah | • Leveling width | 2500mm / 8.20ft |
| • Battery dimension | 644x452x427.5mm
2.11x1.48x1.40ft | • Net weight | 430kgs / 948lbs |
| • Maximum power range | ≅3kW | • Dimension | 3210x2730x1160mm
10.53x8.96x3.81ft |
| • Voltage range | 48V | | |

PRODUCT FEATURES

- Battery parameters: 48V, 5.6 kWh.
- Charging current 30A, fully charged in 4 hours.
- Inverter power 3kW.
- 10 hours of run time, may vary based on charging and job site conditions.

■ WS940D

ELECTRIC CONCRETE LASER LEVELING MACHINE

TECHNICAL PARAMETERS

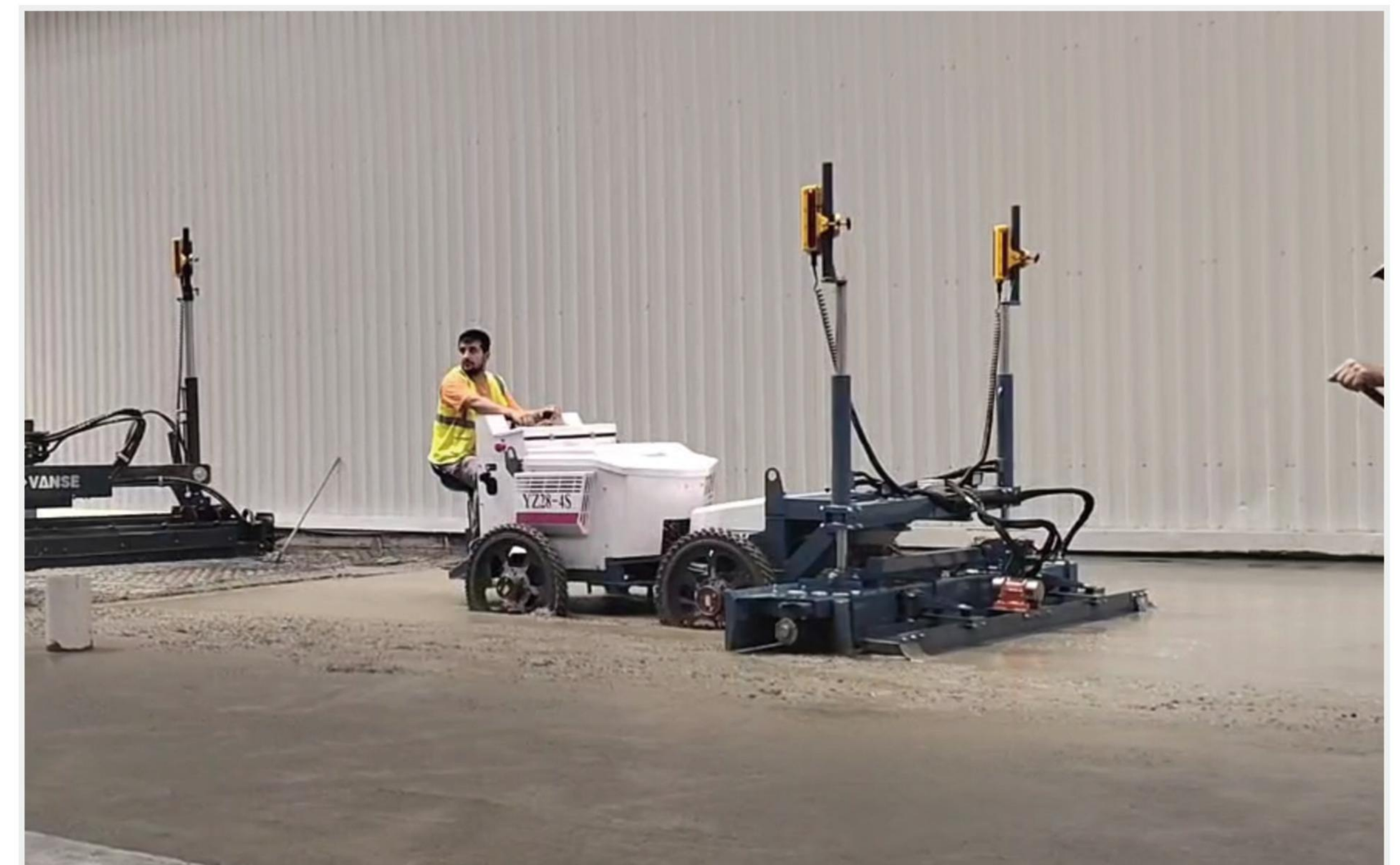
- | | | | |
|------------------------------|-----------------------------------|------------------|--------------------------------------|
| • Battery capacity | 310Ah | • Leveling width | 2500mm / 8.20ft |
| • Battery dimension | 830x445x530mm
2.72x1.46x1.74ft | • Net weight | 1140kgs / 2513lbs |
| • Maximum power range | ≅13.7kW | • Dimension | 3600x3000x1650mm / 11.81x9.84x5.41ft |
| • Voltage range | 70V-94V | | |
| • Working voltage / pressure | 4.5Mpa | | |

PRODUCT FEATURES

- Battery parameters: 83.2V, 24.96 kWh.
- 13kW, 18HP High Speed Motor.
- Charging current 100A, fully charged in 3 hours.
- 6 hours of run time, may vary based on charging and job site conditions.



■ CONSTRUCTION CASE



■ BL-360 CONCRETE DISTRIBUTOR



DCH Remote control

TECHNICAL PARAMETERS

- | | | | |
|----------------------|---|-----------------------|--|
| • Engine model | HONDA GX390 | • Distributing radius | 2.3m / 7.55ft |
| • Power | 13HP | • Walking speed | 0-5km / h |
| • Fuel | Gasoline | • Pipe diameter | DN125 |
| • Fuel tank capacity | 6.5L | • Drive mode | Hydraulic drive |
| • Ground clearance | 0.18m / 0.59ft | • Control mode | Remote control, Continuously variable transmission (CVT) |
| • Steering mode | Front wheel, four wheel and crab steering | • Net weight | 650kgs / 1433lbs |
| • Steering angle | 360 degree | • Dimension | 3470x1350x1200mm / 11.38x4.43x4.0ft |
| • Tire | Inflatable tire | | |

■ CONSTRUCTION CASE



■ BG125 PIPE PULLER MACHINE



TECHNICAL PARAMETERS

- | | | | |
|----------------------|---|--------------------------|-------------------------------------|
| • Engine model | HONDA GX390 | • Tyre Mode | Pneumatic Tyre |
| • Type | Gasoline, Air-cooled, 4-Stroke, Single-Cylinder | • Velocity | 0-5km / h |
| • Power | 8.7kW / 11.67HP | • Minimum turning Radius | 1100mm |
| • Lubricant Quantity | 1.1L | • Forward, Backward | Remote Control |
| • Fuel Tank Capacity | 6.5L | • Turn | Remote Control |
| • Pipe Management | Hydraulic Tightening | • Fastening Motion | Remote Control |
| • Clamp opening | 0.4m / 1.31ft | • Promote | Remote Control |
| • Drive Mode | Hydraulic Motor | • Dimension | 1840x1390x1000mm / 6.04x4.56x3.28ft |
| | | • Transportation size | 2000x1500x1100mm / 6.56x4.92x3.61ft |
| | | • Weight | 550kgs / 1212.54lbs |





■ VS1046H RIDE-ON TROWEL



TECHNICAL PARAMETERS

Engine model	BRIGGS & STRATTON
Power	35HP / 40HP
Fuel	Gasoline
Fuel tank capacity	20L
Water tank capacity	20L
Drive mode	Hydraulic drive
Working diameter	116cmx2 / 46inchx2
Working speed	125-175rpm
Blade size	450(L)×200(W)mm / 18×8inch
Net weight	520kgs / 1146lbs
Dimension	2450x1300x1500mm / 8x4x5ft
Transportation size	2660x1360x1480mm / 8.73x4.46x4.86ft

■ VS1046 RIDE-ON TROWEL

TECHNICAL PARAMETERS

Engine model	BRIGGS & STRATTON
Power	35HP / 40HP
Fuel	Gasoline
Fuel tank capacity	40L
Water tank capacity	40L
Drive mode	Mechanical drive
Working diameter	116cm×2 / 46inch×2
Working speed	125-175rpm
Blade size	450(L)×200(W)mm / 18x8inch
Net weight	486kgs / 1071lbs
Dimension	2540x1300x1520mm / 8x4x5ft
Transportation size	2660x1360x1270mm / 8.73x4.46x4.17ft



POWER TROWEL

■ VS836H RIDE-ON TROWEL



TECHNICAL PARAMETERS

Engine model	HONDA GX690
Power	18.4kW / 25HP
Fuel	Gasoline
Fuel tank capacity	20L
Water tank capacity	20L
Drive mode	Hydraulic drive
Working diameter	96cmx2 / 36inchx2(float pan diameter)
Working speed	80-150rpm
Blade size	350(L)x150(W)mm / 14x6inch
Net weight	420kgs / 926lbs
Dimension	2000x1000x1300mm / 7x3x4ft
Transportation size	2160x1160x1430mm / 7.09x3.81x4.69ft

■ VS836 SIDE MOUNTED ENGINE

TECHNICAL PARAMETERS

Engine model	HONDA GX690
Power	18.4kW / 25HP
Weight	310kg
Blade speed	160 / min
Working width	1900mm
Dimensions	1985x995x1040mm / 6.51x3.26x3.41ft
Blade size	350x145x2.0mm
Disc size	940mm



■ VS836 RIDE-ON TROWEL



TECHNICAL PARAMETERS

Engine model	HONDA GX690
Power	18.4kW / 25HP
Fuel	Gasoline
Fuel tank capacity	19L
Water tank capacity	19L
Working diameter	96cmx2 / 36inchx2(float pan diameter)
Drive mode	Mechanical mode
Working speed	80-150rpm
Blade size	350(L)x150(W)mm/14x6inch
Net weight	370kgs / 816lbs
Dimension	2000x1000x1300mm / 7x3x4ft
Transportation size	2160x1160x1230mm / 7.09x3.81x4.04ft

■ VS830 SIDE MOUNTED ENGINE

TECHNICAL PARAMETERS

Engine model	BRIGGS & STRATTON
Power	10.07kW / 13.5HP
Weight	230kg
Blade speed	160 / min
Working width	1580mm
Dimensions	1690x850x1030mm / 5.54x2.79x3.38ft
Blade size	295x145x2.0mm
Disc size	815mm



POWER TROWEL

■ VS436

WALK-BEHIND TROWEL



TECHNICAL PARAMETERS

Engine model	HONDA GP200
Power	6.5HP
Fuel	Gasoline
Fuel tank capacity	3.5L
Working diameter	96cm / 36inch
Working speed	80-150rpm
Blade size	350x150 mm / 14x6 inch
Net weight	80kgs / 176lbs
Dimension	2180x1000x1120mm / 7.15x3.28x3.67ft
Transportation size	1410x1110x1030mm / 4.63x3.64x3.38ft

■ VS424

EDGING TROWEL



TECHNICAL PARAMETERS

Engine model	HONDA GX160
Power	5.5HP
Fuel	Gasoline
Fuel tank capacity	3.5L
Working diameter	60cm / 24inch
Net weight	62kgs / 113lbs
Dimension	2050x620x1010mm / 6.73x2.03x3.31ft
Transportation size	860x860x930mm / 2.82x2.82x3.05ft

■ PAN



D46



D24



D36R

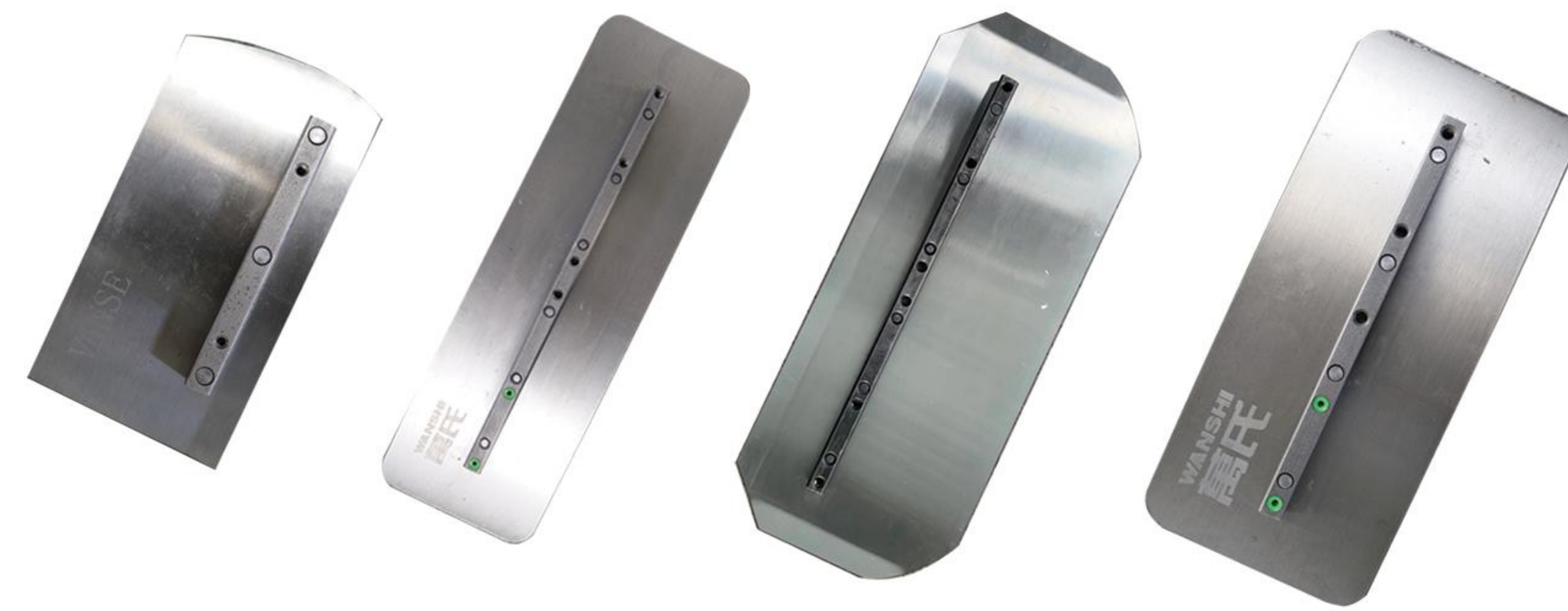


D36H

TECHNICAL PARAMETERS

Product name	Model	Parameters	Unit Weight
Disc for 46" ride-on power trowel	D46	(Diameter 116cm / 3.81ft) 3.0mm / 0.12inch 10 claws	27.5kgs / 60.6lbs
Disc for 24" edging power trowel	D24	(Diameter 60cm / 1.97ft) 2.0mm / 0.08inch 4 claws	6.18kgs / 13.6lbs
Disc for 36" ride-on power trowel	D36R	(Diameter 96cm / 3.15ft) 3.0mm / 0.12inch 8 claws	19kgs / 41.9lbs
Disc for 36" hand-held power trowel	D36H	(Diameter 96cm / 3.15ft) 3.0mm / 0.12inch 4 claws	19kgs / 41.9lbs

■ BLADE



B24

B46-1

B46-2

B46-3

Technical Parameters

Name	Model	Parameters	Unit Weight
B24	Ordinary	120x228x1.3mm 4.72x8.98x0.05inch	1kgs 2.2lbs
B46-1	Ordinary	145x460x2.0mm 5.71x18.11x0.08inch	2kgs 4.4lbs
B46-2	Combination	195x460x2.0mm 7.68x18.11x0.08inch	2kgs 4.4lbs
B46-3	Widen	195x460x2.0mm 7.68x18.11x0.08inch	2kgs 4.4lbs

Technical Parameters

Name	Model	Parameters	Unit Weight
B36-1	Ordinary	145x350x2.0mm 5.71x13.78x0.08inch	1kgs 2.2lbs
B36-2	Combination	195x355x2.0mm 7.68x13.98x0.08inch	2kgs 4.4lbs
B36-3	Widen	195x350x2.0mm 7.68x13.78x0.08inch	2kgs 4.4lbs

Technical Parameters (resin blades)

Name	Model	Parameters	Unit Weight
B424	Ordinary	117x 227x10mm 4.61x 8.94x0.39inch	0.65kgs 1.43lbs
B436	Ordinary	152x353x10mm 5.98x 13.90x0.39inch	1.65kgs 3.64lbs
B436	Combination -2	192x353x10mm 7.56x13.90x0.39inch	1.95kgs 4.30lbs
B446	Ordinary	152x460x10mm 5.98x18.11x0.39inch	2.05kgs 4.52lbs
B446	Combination -2	192x460x10mm 7.56x18.11x0.39inch	2.65kgs 5.84lbs



B424

B436

B436-2

B446

B446-2

■ CONSTRUCTION CASE



CONCRETE CUTTING MACHINE

■ VS-HM500 CONCRETE CUTTING MACHINE



TECHNICAL PARAMETERS

Engine model	BRIGGS & STRATTON G420F
Power	13.5HP
Fuel	Gasoline
Fuel tank capacity	6.6L
Water tank capacity	46L
Walking mode	Walk-behind
Saw blade diameter	245-500mm / 10-20inch
Saw blade shaft diameter	50mm / 12inch
Cutting depth	50-170mm / 2-7inch
Cutting depth adjustment method	Manual screw
Net weight	136kgs / 300lbs
Dimension	1050×530×910mm / 3.44×1.74×2.99ft

■ SAW BLADE



300MM / 0.98FT

400MM / 1.31FT

500MM / 1.64FT

■ VS1000 HAND-PUSHED SPREADER



■ VS-HM501 CONCRETE CUTTING MACHINE



TECHNICAL PARAMETERS

Engine model	HONDA GX390
Power	13HP
Fuel	Gasoline
Fuel tank capacity	6.5L
Water tank capacity	46L
Walking mode	Semi-automatic
Saw blade diameter	245-500mm / 10-20inch
Saw blade shaft diameter	50mm / 2inch
Cutting depth	50-170mm / 2-7inch
Cutting depth adjustment method	Manual screw
Net weight	136kgs / 300lbs
Dimension	1050×530×910mm / 3.44×1.74×2.99ft

TECHNICAL PARAMETERS

Net weight	60kgs / 132lbs
Packing size	1220x630x570mm / 48x25x22inch
Hopper size	1000x450x400mm / 39x18x16inch
Transportation size	1560x760x860mm / 61.42x29.2x33.86inch

FLOOR MACHINE

■ CONCRETE LEVELING RULER



PRODUCT FEATURES

Engine model	HONDA GX35
Power	1.5HP
Exciting force	1700N
Material	Aluminium
Ruler length	1m / 2m / 3m(Optional)
Ruler width	140mm
Ruler height	70mm
Ruler thickness	6mm
Net weight	27kgs / 60lbs
Dimension	700x455x405mm /
Transportation size	27.5x17.9x15.9inch
	666x455x405mm /
	26.2x17.9x15.9inch

■ CONSTRUCTION CASE



■ BACKPACK VIBRATING ROD



PRODUCT FEATURES

Engine model	HONDA GX35
Power	1.5HP
Exciting force	1700N
Vibration mode	Percussion
Vibrating rod	φ38x2500mm / 1.50x98.43inch
Net weight	14kgs / 30.9lbs
Dimension	Body 350x330x435mm /
	13.78x12.99x17.13inch
	Rod 700x550mm / 27.56x21.65inch
Transportation size	350x350x450mm /
	13.78x12.99x17.13inch



TRACKED MINI DUMPER

■ VSD500L TRACKED MINI DUMPER



PRODUCT FEATURES

Engine model	BRIGGS&STRATTON PIONEER
Displacement	203cc
Total weight	550kg / 1212.54lb
Maximum load	500kg / 1102.31lb
Maximum rise	1200mm / 3.94ft
Unloading height above ground	1050mm / 3.44ft
Tipping system	Hydraulic tipper
Tilting angle	90°
Transportation size	2060x1040x1470mm / 6.76x3.41x4.82ft

■ VSD1200 / VSD1200S TRACKED MINI DUMPER



PRODUCT FEATURES

Engine model	BRIGGS&STRATTON
Displacement	420cc
Net weight	850kg / 1873.93lb
Maximum load capacity	1200kg / 2645.55lb
Maximum rotation angle	180°
Rotation mode	Hydraulic rotation
Tipping system	Hydraulic tipper
Tilting angle	90°
Transportation size	2260X1040X1550mm / 7.41x3.41x5.09ft

■ VSD2000R TRACKED MINI DUMPER



PRODUCT FEATURES

Overall Dimensions	4400(L)x1800(W)x2700(H)mm / 14.44(L)x5.91(W)x8.86(H)ft
Machine Weight	3350kg
Rotation Angle	180°
Rated Bucket Capacity	2m ³
Rated Load Capacity	2.2t
Rated power	37kW
Horse power	50HP
Cab type	Small Towing

■ TYPES OF STEEL FIBERS



- Glued hooked end steel fiber



- Loose hooked end steel fiber



- Milling steel fiber



- Hooked end copper coated steel fiber



- Corrugated steel fiber



- Polyacrylonitrile fiber

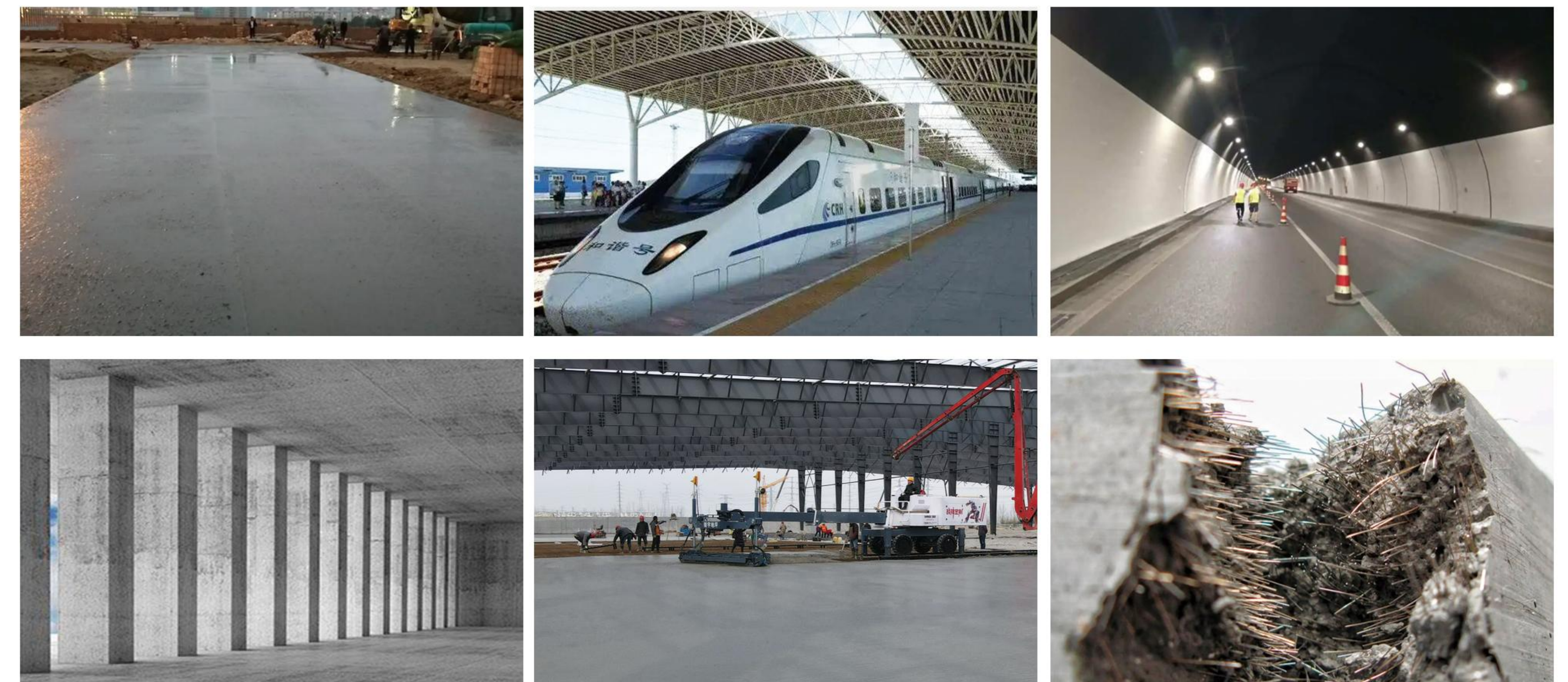


- Polypropylene fiber

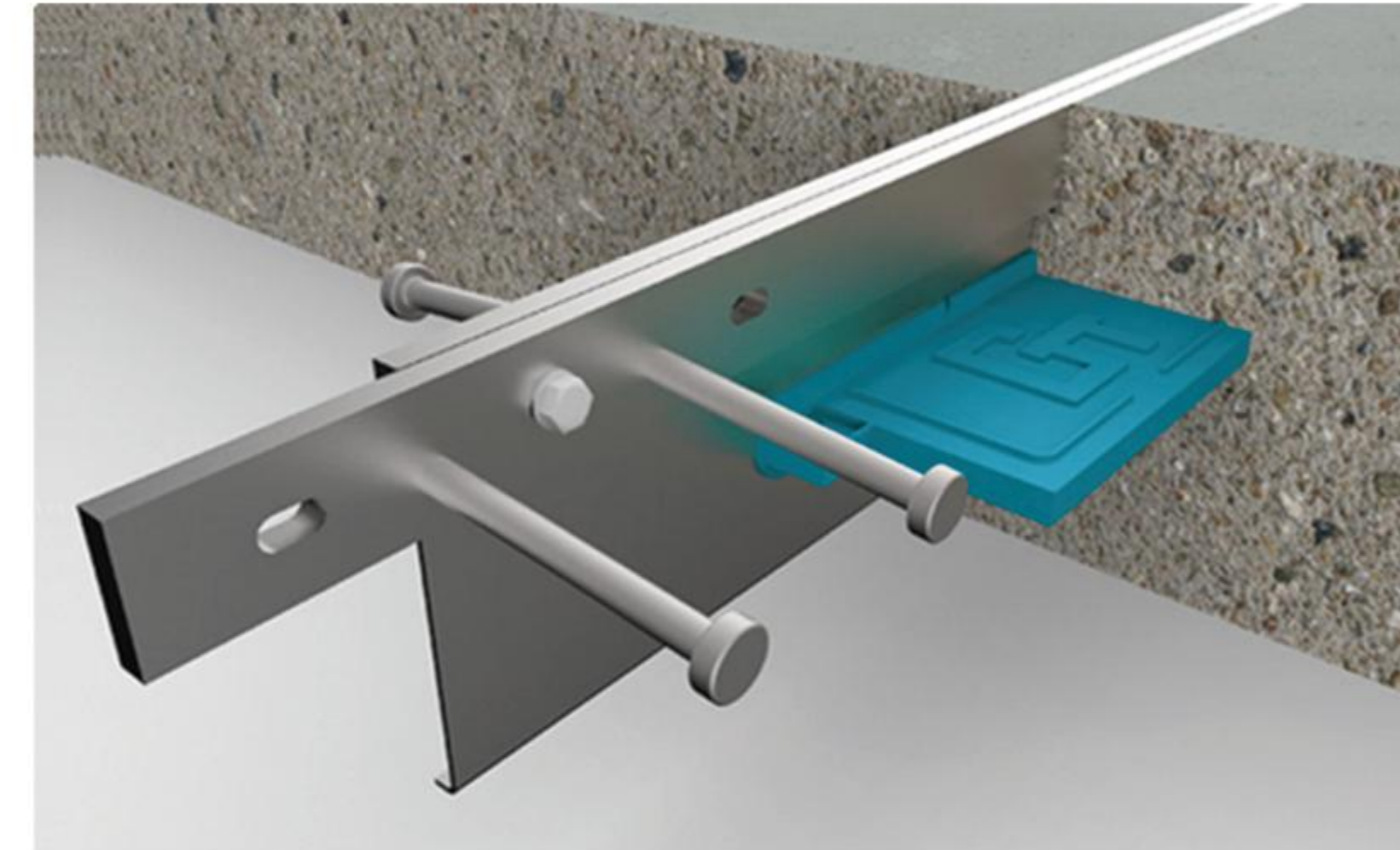
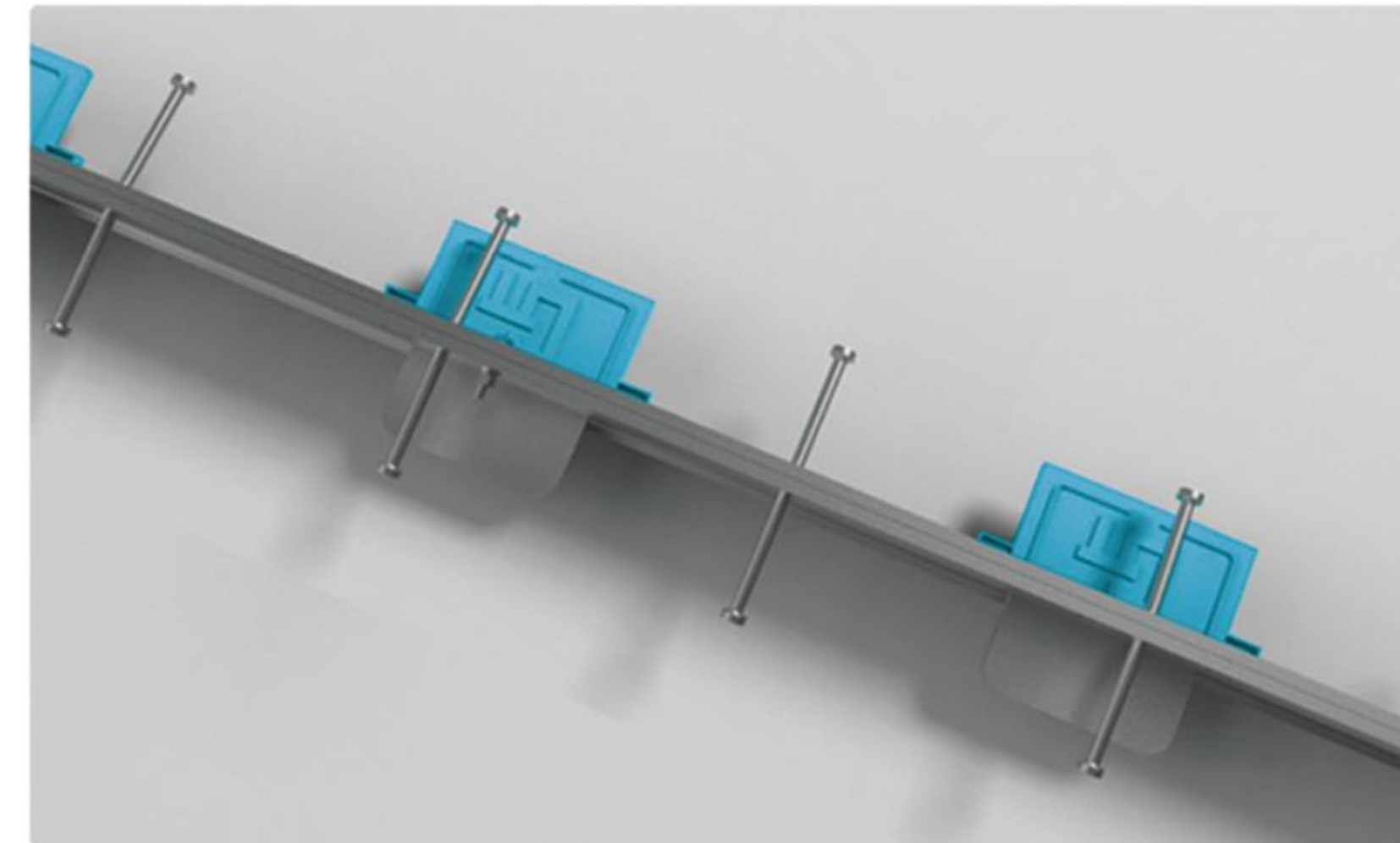


- Glass fiber

Model No.	Equivalent diameter (mm)	Fiber length (mm)	L/D ratio	Tensile strength (Mpa)
WS-60 / 60	1	60	60	≥1100 / ≥1300
WS-50 / 60	1	50	50	≥1100 / ≥1300
WS-66 / 60	0.9	60	66	≥1100 / ≥1300
WS-55 / 50	0.9	50	55	≥1100 / ≥1300
WS-39 / 35	0.9	35	39	≥1100 / ≥1300
WS-80 / 60	0.75	60	80	≥1100 / ≥1300
WS-66 / 50	0.75	50	66	≥1100 / ≥1300
WS-46 / 35	0.75	35	46	≥1100 / ≥1300

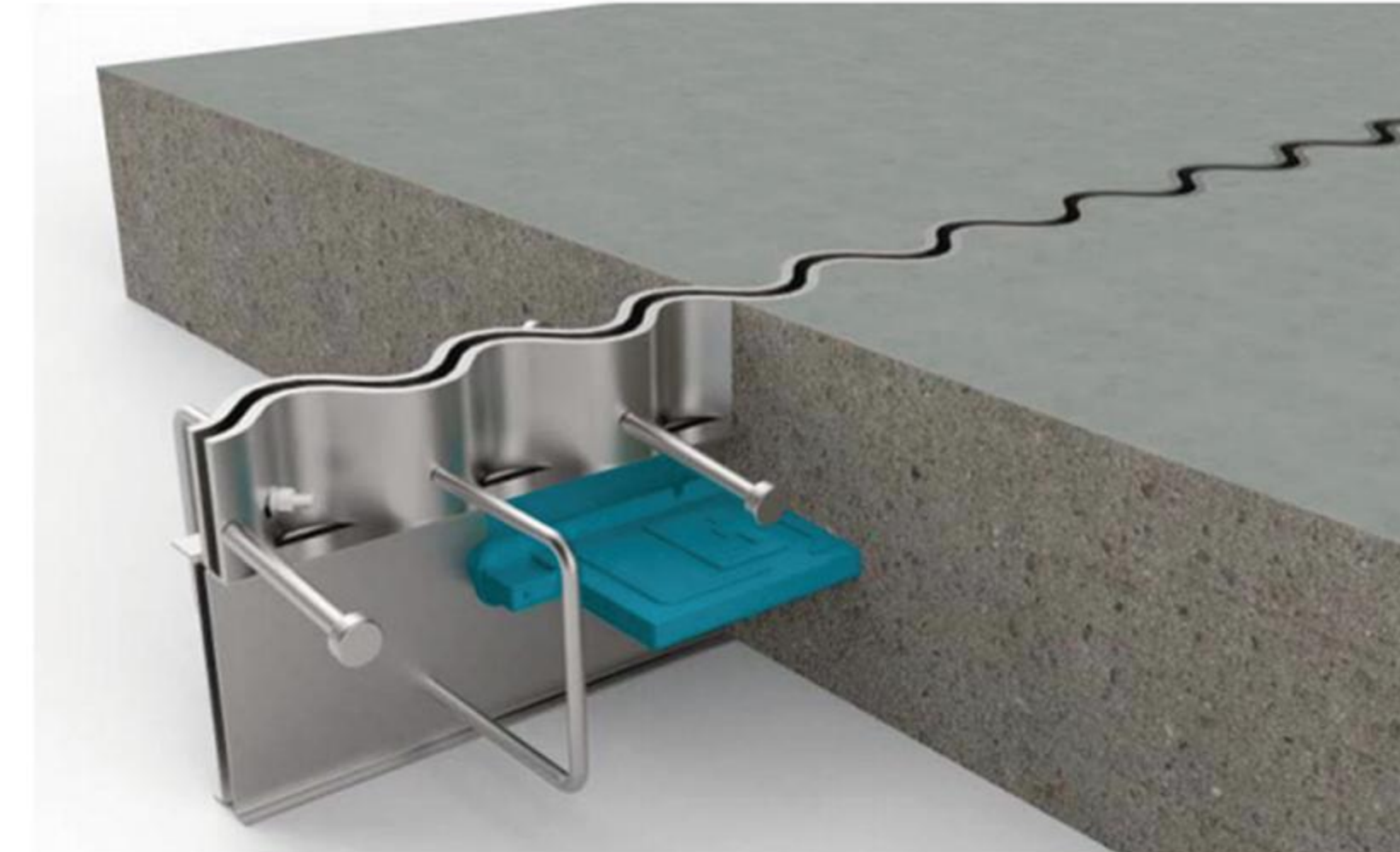


For use in heavy-load expressway subgrades, high-speed rail, tunnels, columns, prefabricated building wall panels and culvert cover plates.



• AFJ TYPE

AFJ type of armour joint is composed of angle protection flat steel, floor compartment joint steel plate, force transmission steel plate, force transmission plate free expansion sheath, easy-to-break plastic bolts, anchor bolts, etc. After the system is installed, each compartment block of the floor can be freely expanded and contracted in both vertical and horizontal directions to avoid cracks.



• S-TYPE

S type of armour joint is a new type of floor expansion joint system, which has the edge protection and anti-settling force transmission functions of traditional armour joints it noise-free function. The upper part is composed of two specially formed S-shaped corrugated high-precision flat steels which form an edge protection and noise prevention system. The S-shaped flat steel is anchored to the concrete through the anchor bolts and U-shaped threaded steel bars welded on it. The lower part is composed of two split steel plates, a force transmission plate and a force transmission sleeve. The upper and lower parts are connected by welding and U-shaped steel bars. The left and right parts of the S-shaped corrugated high-precision flat steel and the two split steel plates are connected by easy-to-break nylon bolts.

• CSJ-A TYPE

Cast-in CSJ-A Type Expansion Movement Joint with sinusoidal Profled Cover Plate, used for the position of structural joints in floor of buildings. The system is mainly composed of a cover plate, a special connecting steel angle, a shear studs or U-shaped steel bar. Among them, the cover plate is composed of three parts, the left and right sides of the cover plate and the connecting steel angle are embedded in the floor together to form a permanent arises and supports, the middle part is a movable cover plate, the straight side and one side of the connecting angle steel is fixed with countersunk bolts, the S side sets on top of the other side angle for free movement.

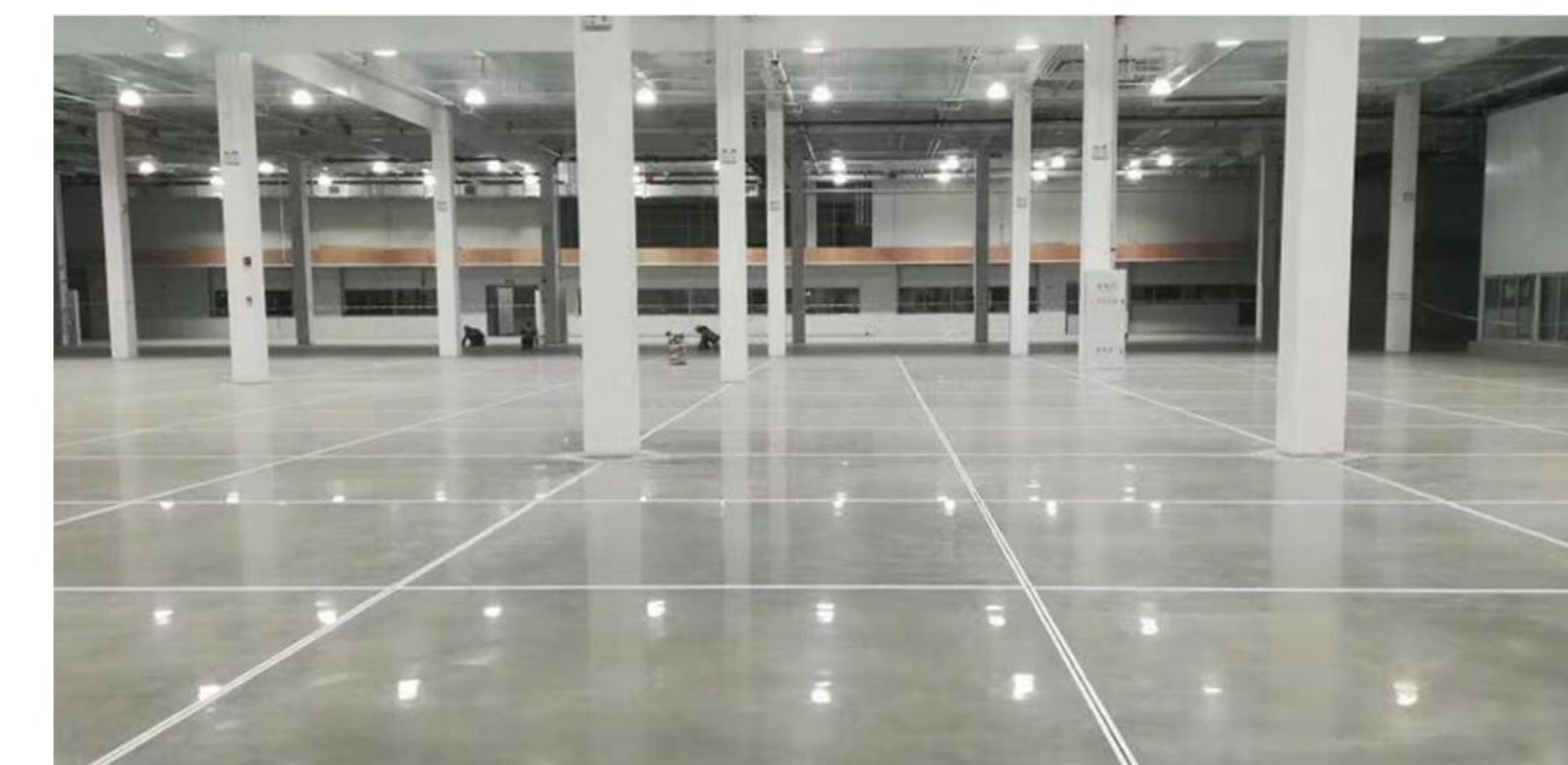


• COLUMN ISOLATOR

Column isolator is a perfect solution for prevention of cracks at corners of column, pit and machine foundation. AFJ diamond, rectangular and round column isolator can be used for isolating columns under different conditions.

Product Features

- Permanent arises for edge protection
- Suitable for wider gap(S type)
- Noise reduction and shock free when AGV vehicle across the joint(S type)
- Time and labor cost efficiency
- Architectural aesthetics
- Lesser or zero maintenance



■ WSY-55C

PORTABLE LITHIUM BATTERY LIGHTING



TECHNICAL PARAMETERS

Charge input	1600W / H
Direct current output	DC48V / 50A
Alternating current output	3kW AC220V / AC110V
Battery capacity	5.6kW / h
Light power	4x100W
Battery life	11 hours of run time per full charge
Light pole telescopic height	1740mm-3800mm / 68.5inch-149.6inch
Net weight	72kgs / 159lbs
Dimension	640x490x1740mm / 25.2x19.3x68.5inch
Transportation size	Power supply size: 860x660x650mm 33.86x25.98x25.59inch
	Light pole size: 1960x690x380mm 77.17x27.17x15.35inch

PRODUCT FEATURES

- Flexible adjustment, easy lifting:
The illuminating angle of the lamp head and the height of the lamp pole can be easily adjusted, so that it can adapt to a variety of complex lighting environments, providing users with more flexible and efficient lighting solutions.
- Rich output interfaces:
Provide 1 industrial aviation socket, 1 standard 5-hole socket, and dedicated lighting socket. These interfaces can meet the power supply needs of different devices, providing users with great convenience and flexibility.
- Comprehensive security protection:
The mobile lighting is equipped with a comprehensive electrical safety protection system, including multiple protection mechanisms such as overvoltage, undervoltage, overcharging, overdischarging, overheating, overload and short circuit, ensuring stable and safe operation under various usage conditions.

■ WSY-160T

SOLAR LITHIUM BATTERY LIGHTING



TECHNICAL PARAMETERS

Solar charge input	1.26kW / H
Mains charge input	3kW / H
Alternating current output	5kW
Power capacity	16kW / H
Light power	4x200W=800W
Battery life	20 hours of run time per full charge
Light pole telescopic height	2430mm-6000mm
Net weight	800kgs / 1763.7lbs
Dimension	2160x1540x2430mm / 85.0x60.6x95.7inch
Transportation size	2300x1700x2470mm / 90.55x66.93x97.24inch

PRODUCT FEATURES

- Flexible adjustment, easy lifting:
The illuminating angle of the lamp head and the height of the lamp pole can be easily adjusted, so that it can adapt to a variety of complex lighting environments, providing users with more flexible and efficient lighting solutions.
- Rich output interfaces:
Provide 1 industrial aviation socket, 1 standard 5-hole socket, and dedicated lighting socket. These interfaces can meet the power supply needs of different devices, providing users with great convenience and flexibility.
- Built-in onboard bidirectional inverter, it can be discharged and charged with mains electricity
- Comprehensive security protection:
The mobile lighting is equipped with a comprehensive electrical safety protection system, including multiple protection mechanisms such as overvoltage, undervoltage, overcharging, overdischarging, overheating, overload and short circuit, ensuring stable and safe operation under various usage conditions.

SLIP FORM PAVER

■ WS3-14



TECHNICAL PARAMETERS

• Engine model	CUMMINS QSB4.5	• Outrigger lifting height	900mm / 35inch
	4 cylinder diesel engine	• Right outrigger lateral displacement	550mm / 22inch
• Power	97kW / 132HP	• Mould lifting height	550mm / 20inch
• Fuel	Diesel	• Mould side shift distance	650mm / 26inch
• Fuel tank capacity	380L	• Number of vibrator interface	6 channels (optional 8 channels)
• Water tank capacity	380L	• Net weight	11000kgs / 24251lbs
• Hydraulic oil tank capacity	200L	• Dimension	6500x2615x2550mm / 21.33x8.58x8.37ft
		• Transportation size	7000x2200x2550mm / 22.97x7.22x8.37ft

PRODUCT FEATURES

- High-pressure cleaning water gun, the machine comes with a high-pressure cleaning water gun, which is convenient for cleaning the machine.
- Equipped with a wireless remote control, it can remotely control the machine's walking, steering, lifting and other functions, which is convenient and safe.
- All three tracks can be steering, making construction more flexible.
- High wear-resistant alloy auger blades for longer service life.
- The machine is equipped with a pushcart device that can be used to push the concrete tanker.
- Emergency stop button, there are emergency stop button on each side of the machine, including the front, back, left, right, and control panel, to facilitate operation at different positions and ensure safety.
- The modular design of the operation panel makes the control buttons clear at a glance and easy to use. Additionally, the entire operation panel has a high waterproof rating and is not afraid of rain exposure.
- The built-in hidden butter spout is both convenient for adding butter and avoids damage from collisions.

■ CONSTRUCTION CASE

